



NORDSHIELD SA MINERAL CAP

Waterproofing composite self-adhesive membrane (SBS)

TECHNICAL SPECIFICATIONS

CHARACTERISTICS	TESTING METHOD	M.U.	TOLERANCE	VALUE
Adhesion of granules	EN 12039	%	MDV	< 30
Length/Width	EN 1848-1	m	MLV	10,0-1% / 1,0-1%
Visible defects	EN 1850-1	visual		None
Thickness	EN 1849-1	mm	MDV $\pm 5\%$	3,3 on mineral
Straightness	EN 1848-1	mm/10 m	MLV	< 20
Watertightness at 60 kPa	EN 1928-B	kPa		Pass
Maximum tensile strength (L/T)	EN 12311-1	N/50 mm	MDV $\pm 20\%$	500/400
Elongation (L/T)	EN 12311-1	%	MDV -15	35/35
Resistance to tearing (L/T)	EN 12310-1	N	MDV -30%	150/150
Dimensional stability	EN 1107-1	%	MLV	-0,5
Cold flexibility	EN 1109	°C	MLV	-20
Flow resistance	EN 1110	°C	MLV	+100
Resistance to impact	EN 12691	mm	MLV	1000
Resistance to static loading	EN 12730	Kg	MLV	15

MDV : value declared by the manufacturer associated with a declared tolerance. MLV : limit value, minimum or maximum, declared by the manufacturer.

PACKAGING

PRODUCT	ROLL SIZE	WEIGHT KG/M2	THICKNESS MM	SQUARE METRES PER PALLET	STANDARDS
NORDSHIELD SA MINERAL CAP	10 m x 1 m	-	3,3 on mineral	270	EN 13707 EN 13859-1 Miami-Dade ASTM E 108

The technical data given is based on average values obtained during production. We reserve the rights to change or modify the nominal values without prior notice or advice. The information contained in this data sheet are based on our experience. We cannot take any responsibility for a possible incorrect use of the products. The customer has to choose under their own responsibility a product fit for the intended use.

E232669 - 13/06/2024 - This version supersedes all previous ones.

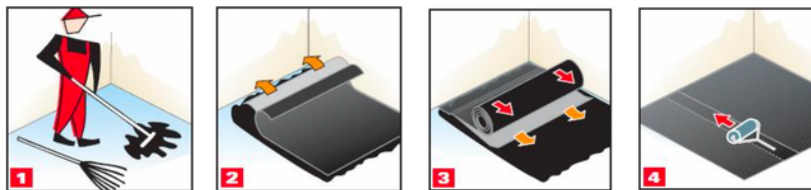


Cindu USA

Distributor of Nordbitumi in Florida

APPLICATION

1. On cementitious surfaces and similar apply, by roller or airless, synthetic primer PRIMER SINT, approx. consumption 200–400 g/m². This application is not required on wooden roofs except OSB boards.
2. Position NORDSHIELD SA MINERAL CAP on the application surface; provide side & head laps respectively of 10 & 15 cm's between the sheets.
3. Remove the release film from the lower face, this is divided longitudinally in two sections, in one or two steps. It is always suggested to mechanically fix head & side laps.
4. Use suitable roller by applying pressure over all of the membrane surface, particularly the side & head laps to further promote adhesion.
5. Position suitable single or double battens for subsequent laying of the sealing element consisting of a discontinuous covering mantle (tiles, roof tiles, etc.) as required by the UNI 9460: 2008 standard – Discontinuous roofing for roofs.
6. In the event of high internal relative humidity, or the presence of humidity in the wooden deck application surface, to prevent the formation of condensation on the inner face of the adhesive membrane during the night, which may cause marks or stains over time in the ceiling of the rooms below, foresee the use of NORD BASE vapor separation and diffusion layer having a polypropylene film finish mechanically fixed to the support with broad-headed nails. The adhesive membrane is then applied over the vapor diffusion layer.



APPLICABLE STANDARDS

Miami-Dade
ASTM E 108



Contact us at:

☎ 305 593 8450



Cindu USA

Distributor of Nordbitumi in Florida