



# NORDSHIELD BASE

Waterproofing composite self-adhesive membrane (SBS)

## TECHNICAL SPECIFICATIONS

CHARACTERISTICS	TESTING METHOD	M.U.	TOLERANCE	VALUE
Length/Width	EN 1848-1	m	MLV	18,6-1% / 1,0-1%
Visible defects	EN 1850-1	visual		None
Thickness	EN 1849-1	mm	MDV $\pm$ 5%	1,5
Straightness	EN 1848-1	mm/10 m	MLV	< 20
Watertightness at 60 kPa	EN 1928-B	kPa		Pass
Maximum tensile strength (L/T)	EN 12311-1	N/50 mm	MDV-20%	300/200
Elongation (L/T)	EN 12311-1	%	MDV-2	2/2
Resistance to tearing (L/T)	EN 12310-1	N	MDV $\pm$ 30%	70/70
Cold flexibility	EN 1109	°C	MLV	-15
Flow resistance	EN 1110	°C	MLV	90
External Fire Performance	EN 13501-5			F ROOF
Reaction to fire	EN 13501-1	class		NPD
Root resistance	EN 13948			NPD

NPD : No Performance Declared in accordance with the EU Construction Products Directive. MDV : value declared by the manufacturer associated with a declared tolerance.

MLV : limit value, minimum or maximum, declared by the manufacturer.

## PACKAGING

PRODUCT	ROLL SIZE	WEIGHT KG/M2	THICKNESS MM	SQUARE METRES PER PALLET	STANDARDS
NORDSHIELD BASE	18,6 m x 1 m	-	1,5	558	EN 13707 Miami-Dade ASTM E 108

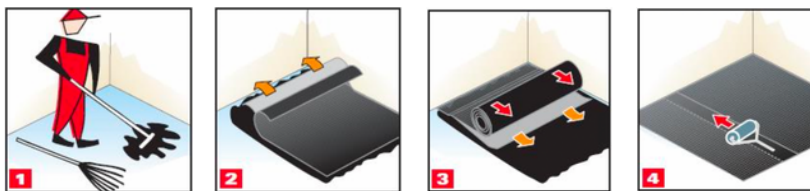
The waterproofing membrane based on distilled bitumen and polymers, as shown in this data sheet does not require the issue of a MSDS, because it does not contain dangerous substances. The information data sheet for the proper use of products is available. The technical data given is based on average values obtained during production. We reserve the rights to change or modify the nominal values without prior notice or advice. The information contained in this data sheet are based on our experience. We cannot take any responsibility for a possible incorrect use of the products. The customer has to choose under their own responsibility a product fit for the intended use.

E232090 - 27/08/2024 - This version supersedes all previous ones.



## APPLICATION

1. On cementitious surfaces and similar apply, by roller or airless, synthetic primer PRIMER SINT, approx. consumption 200– 400 g/m<sup>2</sup>. This application is not required on wooden roofs except OSB boards.
2. Position NORDSHIELD BASE on the application surface; provide side & head laps respectively of 10 & 15 cm's between the sheets.
3. Remove the release film from the lower face, this is divided longitudinally in two sections, in one or two steps. It is always suggested to mechanically fix head & side laps.
4. Use suitable roller by applying pressure over all of the membrane surface, particularly the side & head laps to further promote adhesion.
5. Position suitable single or double battens for subsequent laying of the sealing element consisting of a discontinuous covering mantle (tiles, roof tiles, etc.) as required by the UNI 9460: 2008 standard – Discontinuous roofing for roofs.
6. In the event of high internal relative humidity, or the presence of humidity in the wooden deck application surface, to prevent the formation of condensation on the inner face of the adhesive membrane during the night, which may cause marks or stains over time in the ceiling of the rooms below, foresee the use of NORD BASE vapor separation and diffusion layer having a polypropylene film finish mechanically fixed to the support with broad-headed nails. The adhesive membrane is then applied over the vapor diffusion layer.



## APPLICABLE STANDARDS

Miami-Dade  
ASTM E 108



Contact us at:

☎ 305 593 8450



Cindu USA

Distributor of Nordbitumi in Florida